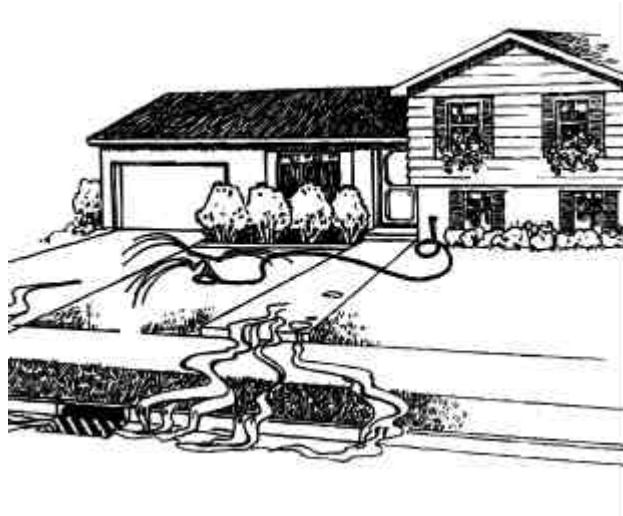




Yard Care and the Environment

A series of Water Quality Fact Sheets for Residential Areas



West Valley Storm Water Utility
3600 Constitution Blvd.
West Valley City, Utah 84119-3720
801-963-3406

Part of a Series of Water Quality Fact Sheets
for Residential Areas

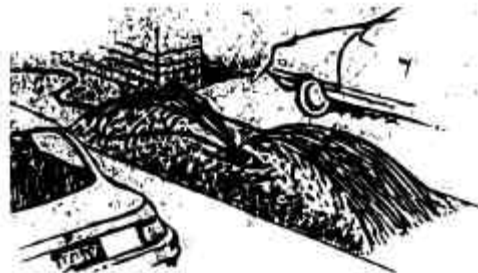
For decades, American cities and suburbs have grown and spread into the surrounding countryside. With this growth has come an unprecedented seeding and sodding of the landscape — literally millions of acres have been turned into bluegrass lawns. For many homeowners, the residential lawn is the symbol of a well-tended property.

Unfortunately, keeping the lawn emerald-green, bare-foot-soft and dandelion-free requires a significant amount of attention, and can have serious impacts on lakes, streams and groundwater. Water from a sprinkler flowing down one driveway might not seem like a big problem. But careless watering on hundreds of lawns can:

- Wash pollutants into lakes and streams.
- Deplete water supplies. (We live in a desert.)
- Actually damage the lawns it's supposed to help

Like a summer storm, runoff from a sprinkler can wash soil, lawn chemicals, pet waste and other pollutants into storm sewers - a network of underground pipes that empty directly into lakes and streams.

Because lawn watering can have far-reaching effects, there is growing interest among horticulturists, environmentalists, public utility managers and homeowners in how to water correctly. This publication offers practical lawn watering tips that will; save water, help keep our lakes and streams clean, and produce healthy, attractive lawns.



A healthy lawn requires about one inch of water per week. As a general rule, apply the water all at once rather than in several light waterings. Before you water, do some arithmetic. If it just rained 1/4 inch, you probably only need to apply 3/4 inch with the sprinkler. Use common sense, however, and consider the weather forecast. If there is a good chance of rain soon after that 1/4-inch rainfall, don't water at all. If the rain doesn't come, you can make up the difference.

You also need to know your lawn. For example, sandy soils with little organic matter will require more water, heavy clay soils less. Sloping lawns are normally drier than level, low-lying ones. Lawns under large trees, especially during cool weather, may need little or no watering. Avoid watering during the middle of the day when evaporation rates are highest and the water you use will do the least good. Early morning watering will minimize evaporation and help newly seeded areas through the day's heat.

ESTABLISHED LAWNS

How to water . . .

- It's best to water established lawns at the rate of one inch per week, applied all at one time to promote deep rooting. Frequent, light waterings favor shallow roots and plants unable to tolerate dry periods.
- Water early in the morning. If watering is done in the evening, grass stays wet at night, thus increasing risk of disease.

Keep in mind . . .

- Established, healthy lawns can survive several weeks of dormancy during summer with little or no water.
- Watering early in the morning puts less strain on public water supplies because the peak load is during evening hours.
- Excess water can damage roots.

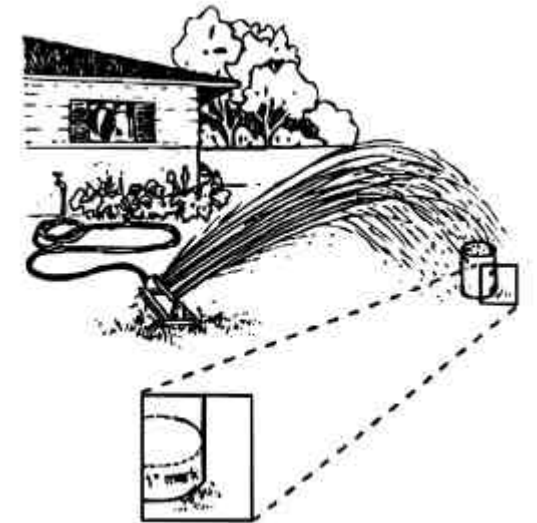
NEWLY SEEDED GRASS

How to water . . .

- Mulch newly seeded areas with straw, marsh hay or lawn clippings to reduce evaporation from the soil surface.
- Light watering every other day is generally sufficient as long as the soil was moist at seeding time.
- Water less frequently when the grass reaches two inches high.

Keep in mind . . .

- Over watering can wash away seeds, cause seeds to rot before they germinate, increase the chances of disease, or slow the growth of new grass.
- Grasses in Utah lawns grow best in cool weather. Plant seed in spring (late April or mid-May) or fall (late August to mid-September) when it's cooler and more rain can be expected.
- When selecting seed, consider bluegrass and fescue mixes, which tend to be more drought-tolerant than ryegrass.



A container with a one-inch mark placed under your sprinkler will help gauge how much water your lawn is getting.

REDUCING THE NEED FOR WATERING

Let grass grow taller . . .

- To promote deep rooting and lawns that tolerate dry conditions, mow grass no shorter than two inches.
- Taller grass shades the soil surface, thus reducing evaporation and sprouting of weed seeds.

Use chemicals wisely . . .

- Proper fertilizing promotes deep roots and drought tolerance. Improper fertilizing can have the opposite effect.
- Don't fertilize a dry lawn - high concentrations of nutrients tend to draw moisture out of grass.
- Control weeds to reduce competition for soil moisture. This may be done by hand, or with careful use of broadleaf herbicides.

Consider the weather . . .

- Don't mow during the heat of the day, especially when conditions are hot and dry; newly cut grass blades lose water quickly.
- Don't water if a one-inch rainstorm has occurred in the last week. Also, postpone watering if the forecast calls for rain in the next few days.

Be creative . . .

- Plan and establish a landscape that has less lawn and requires less water and maintenance. Consider plant groups that include drought tolerant species and organic mulches that can help keep the soil moist.
- Direct downspouts away from foundations and driveways to planting beds and lawns where the water can soak in. Besides more efficient use of water, there will be less runoff from your property.

TIPS ON SPRINKLERS AND EFFICIENT WATERING

Hardly anyone has a perfectly rectangular or circular lawn. Fortunately, there are many sprinkler types to deal with odd angles. Over time, savings on your water bill will pay for the investment on several types. Tips for efficient watering includes:

- Consider a timed sprinkler system, which automatically shuts off after a desired rate of application.
- Use a sprinkling can or hand-held hose to specifically target small areas where use of the sprinkler is wasteful.
- Aerate your lawn to improve water penetration and reduce runoff.
- Avoid using a conventional sprinkler on the strip of lawn between the sidewalk and street. Runoff from this area travels quickly and directly to the gutters and storm sewer. A soaker hose might be the best option.
- Don't forget to turn the sprinkler off!

Forgetfulness can result in a trail of water flowing from your property.



While everyone recognizes that this is a waste of water, other problems caused by careless watering are harder to see. Water flowing down the gutter often carries soil, pet waste, lawn chemicals and other pollutants into storm sewers, which empty into nearby streams and lakes.

Sprinkler runoff makes a natural problem worse. While occasional midsummer rainstorms wash pollutants into lakes and streams, careless lawn watering can create a "rain storm" every day throughout the summer. This additional runoff occurs during the hottest weather and low water conditions in streams and lakes — prime conditions for growth of nuisance algae and aquatic weeds.

Water running off your yard can also erode soil from adjacent undeveloped lots, waterlog sensitive plants, or wash away fertilizers that have been recently applied to lawns and gardens. We can all help minimize these problems by following the common-sense tips in this fact sheet. The result will be healthier lawns and cleaner water.

Thinking things through . . .

In the end, lawn watering is probably governed more by one's point of view than anything else.

For example, a dry lawn has a blue-green color and does not spring back when you walk on it (your footprints remain). A lawn during mid-summer dormancy is a brownish green. To some people, neither of the above is acceptable. However, except under extreme circumstances, even the natural brown-out does no harm. And no amount of mid-summer watering will allow our cool season grasses to look as good as they do during spring or fall. By September, in fact, lawns that were watered throughout the summer generally look no better than lawns that weren't. In other words, a naturally brown lawn in August is not a sign of neglect.

Those who want the green look throughout the summer can benefit from the lawn watering tips inside this pamphlet. Those who are inclined to simply wait out the seasonal changes can be confident that they're not going to harm a healthy lawn.

Above all, heed the suggestions and restrictions of your local water utility during droughts. If you have a private well, don't jeopardize neighborhood supplies by unnecessary watering.

West Valley Storm Water Utility
3600 Constitution Blvd.
West Valley City, Utah 84119-3720
801-963-3406
www.ci.west-valley.ut.us